

ARJUNSINH PARMAR

# R RICHHA

ENGINEERINGS

Direct Link






WEBSITE

## Vacuum Technology

Powering Performance, Delivering Reliability



### OUR PRODUCT

-  Oil Seled Vacuum Pump
-  Water Ring Vacuum Pump
-  All Type Of Vacuum Pump & Parts



## OIL SEALED VACUUM PUMPS – HIGH QUALITY VACUUM PRODUCTS

These are oil-immersed, rotary vane type pumps. The rotor with two spring-loaded vanes is mounted eccentrically in the stator body. As the rotor rotates, the vanes sweep the crescent-shaped air space twice in each revolution.

There is an inbuilt non-return valve which prevents backflow of air. All moving parts are manufactured from graded material. These parts are precisely machined, ground, and assembled with close tolerances which results in increased efficiency and long trouble-free operating life.

### APPLICATION

- Dehydration and Filtration Process
- Distillation, Exhausting Electronic Tubes
- GLS Lamps / Mercury Vapour Lamps & Tubes Sterilizing
- Vacuum Metallurgy Vacuum Sublimation
- Vacuum Impregnation, Thin Film Coating

### SILENT FEATURE

- Simple & Rugged Construction
- Trouble Free Operation
- Easily Handle Dust Laden Gases
- Built-in Anti-suck Facility to Prevent Backflow of Oil

### MATERIAL OF CONSTRUCTION

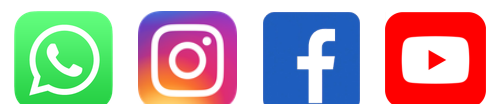
- Cast Iron Rotor Blade as per process application

### RANGE

- Max Capacity: 50 LPM to 10000 LPM (3.06/hr to 600/hr)
- Ultimate Vacuum: Single Stage: 0.05 mm of Hg Double Stage: 0.005 mm of Hg
- Power: 0.25 HP to 20 HP



[Direct Link](#)



[WEBSITE](#)

## OIL SEALED VACUUM PUMP – SPECIFICATION TABLE

MODEL NO.	NO. OF STAGES	FREE AIR DISPLACEMENT (Ltr/Min)	CFM	m <sup>3</sup> /hr	ULTIMATE VACUUM (mm of Hg)	DRIVE MOTOR (HP)	APPROX OIL FILLING (Ltr)
RE-50	1/2	50/50	1.8/1.8	3/3	0.05/0.005	0.25/0.25	2/2
RE-100	1/2	100/100	3.5/3.5	6/6	0.05/0.005	0.25/0.5	2/3
RE-150	1/2	150/150	5.3/5.3	9/9	0.05/0.005	0.5/1.0	3/4
RE-300	1/2	300/300	10.6/10.6	18/18	0.05/0.005	1.0/1.5	6/8
RE-500	1/2	500/500	17.6/17.6	30/30	0.05/0.005	1.5/2.0	7/8
RE-750	1/2	750/750	26.5/26.5	45/45	0.05/0.005	2.0/3.0	8/10
RE-1000	1/2	1000/1000	35.5/35.5	60/60	0.05/0.005	2.0/3.0	15/20
RE-1500	1/2	1500/1500	53.0/53.0	90/90	0.05/0.005	3.0/5.0	20/25
RE-2000	1/2	2000/2000	70.6/70.6	120/120	0.05/0.005	3.0/5.0	25/30
RE-3000	1/2	3000/3000	106.0/106.0	180/180	0.05/0.005	5.0/7.5	35/40
RE-5000	1/2	5000/5000	176.5/176.5	300/300	0.05/0.005	7.5/10.0	40/45
RE-7500	1/2	7500/7500	265.0/265.0	450/450	0.05/0.005	10.0/15.0	50/60
RE-10000	1/2	10000/10000	353.0/353.0	600/600	0.05/0.005	15.0/20.0	65/75



[Direct Link](#)



[WEBSITE](#)

## SINGLE STAGE WATER RING VACUUM PUMPS – BEST VACUUM PRODUCTS

**Richa Engineerings** is the most prominent and leading high-quality 'Single stage water ring vacuum pump' manufacturers in Ahmedabad which exhibit our excellency in designing and manufacturing world-class vacuum pumps. Our Single Stage Vacuum pump showcases our extensive engineering capabilities in manufacturing the vacuum pumps.

We also offer custom designed vacuum pumps to ideally meet your industrial requisites. With simple and rugged construction we ensure hassle free operation of our high capacity vacuum pumps. These pumps are specially designed to easily handle dust and aggressive gases while ensuring optimum performance.

### APPLICATION

- Dehydration & Filtration Processes
- Distillation, Evaporation & Drying
- Deodorization, Evacuation
- Sterilizing, Conveying, Venting & Sucking
- Moisture Extraction, Concentration

### SILENT FEATURE

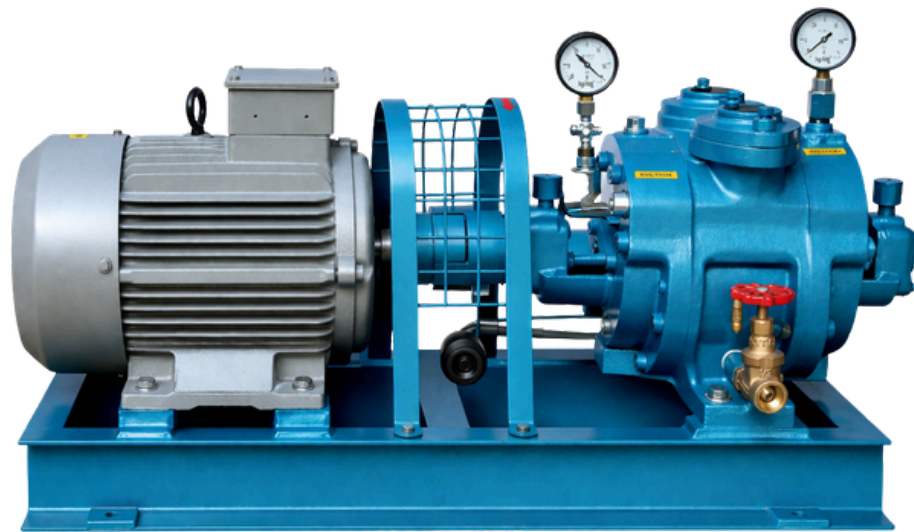
- Simple & Easy Construction
- Can be readily disassembled and reassembled on site by end user
- Rugged construction for heavy duty applications
- Trouble Free Operation & Easy Handle Dust Laden Gases
- Low power and water consumption & optimum performance
- Maintenance free

### MATERIAL OF CONSTRUCTION

- Cast Iron, Rotor Blade As Per Process Application

### RANGE

- Max. Capacity: 85 m<sup>3</sup>/hr to 1080 m<sup>3</sup>/hr
- Maximum Vacuum: -20 mm of Hg
- Power: 0.25 HP to 20 HP



[Direct Link](#)



[WEBSITE](#)

## SINGLE STAGE WATER RING VACUUM PUMP – SPECIFICATION TABLE

MODEL NO.	DRIVE MOTOR (HP)	MAXIMUM CAPACITY (m <sup>3</sup> /hr)	CFM	WATER REQUIRED (LPM)	RPM
RW-3	3	50	30	7	2880
RW-5	5	81	50	10	2880
RW-7.5	7.5	123	75	14	2880
RW-10	10	220	130	20	1440
RW-15	15	330	195	30	1440
RW-20	20	440	260	40	1440
RW-30	30	725	410	60	980
RW-35	35	845	490	80	980
RW-40	40	1080	650	100	980



[Direct Link](#)



[WEBSITE](#)

## TWO STAGE WATER RING VACUUM PUMPS – TOP QUALITY VACUUM PRODUCTS

**Richa Engineerings** vacuum pump manufactures and supplies high quality vacuum products including “Two Stage Water Ring Pumps”.

Our Two Stage Vacuum Pumps are specially designed by comprising the profound needs of different industries for its specific usage. It has advantage of higher capacity at high vacuum and also requires low quantity of water at low pressure.

Our Two Stage Vacuum pump develops maximum vacuum of 720 mm of Hg, when sealing water temperature is 30°C (755 mm of Hg barometric pressure & suction temperature of 30°C).

We design our products by comprehending all application criteria and parameters to make the product superior in terms of quality and get optimum performance.

### APPLICATION

- Dehydration & Filtration Processes
- Distillation, Evaporation & Drying
- Deodorization, Evacuation
- Sterilizing, Conveying, Venting & Sucking
- Moisture Extraction, Concentration

### SILENT FEATURE

- Simple & Easy Construction
- Can be readily disassembled and reassembled on site by end user
- Rugged construction for heavy duty applications
- Trouble Free Operation & Easy Handle Dust Laden Gases
- Low power and water consumption & optimum performance
- Maintenance free

### MATERIAL OF CONSTRUCTION

- Cast Iron, SS-304, SS-316, Bronze, Gun Metal & As Per Process Requirement

### RANGE

- Max. Capacity: 50 m<sup>3</sup>/hr to 1080 m<sup>3</sup>/hr
- Power: 3 HP to 40 HP
- Maximum Vacuum: -710 mm of Hg



[Direct Link](#)



[WEBSITE](#)



### TWO STAGE WATER RING VACUUM PUMP – SPECIFICATION TABLE

MODEL NO.	DRIVE MOTOR (HP)	MAXIMUM CAPACITY (m <sup>3</sup> /hr)	CFM	WATER REQUIRED (LPM)	RPM
RW-1	1	20	10	2	2880
RW-2	2	40	20	4	2880
RW-3	3	60	30	7	2880
RW-5	5	90	50	10	2880
RW-7.5	7.5	120	75	14	1440
RW-10	10	220	130	20	1440
RW-15	15	330	195	30	1440
RW-20	20	460	260	40	1440
RW-25	25	580	320	50	980
RW-30	30	725	410	60	980
MWD-35	35	845	490	80	980
RW-40	40	1080	650	100	980

BEST SELLER

CONTACT US



WEBSITE

(+91) 96243 10068

[info@richaengineerings.in](mailto:info@richaengineerings.in)

